



Electrolux

Eco Preparation 1800 mm Work Table with Upright - Right Bowl

ITEM # _____

MODEL # _____

NAME # _____

SIS # _____

AIA # _____



Electrolux

1800 mm Work Table with Upright - Right Bowl
Eco Preparation



132854 (BTD18R7N)

Work table with right/hand
bowl and upstand, 1800mm

Short Form Specification

Item No. _____

Worktop in 304 AISI stainless steel with upturned edges and under panel made of sound deadening material. Rear upstand h=100mm. Bowl 400x400mm. Square section legs 40x40mm in 304 AISI stainless steel with adjustable feet.

Main Features

- The table can be ordered with the drawer of 400 mm or 600 mm (optional accessory): thanks to the design of the drawer, additional drawers can be added to the first single drawer to create chest of 2, 3 or 4 drawers based on customer's needs.
- Sturdiness, stability and reliability of table accurately tested.

Construction

- Single-pressed bowl (400 x 400 x 200 mm) with overflow pipe and drain hole.
- 40 mm worktop in 304 AISI stainless steel.
- Different taps are available to suit every need.

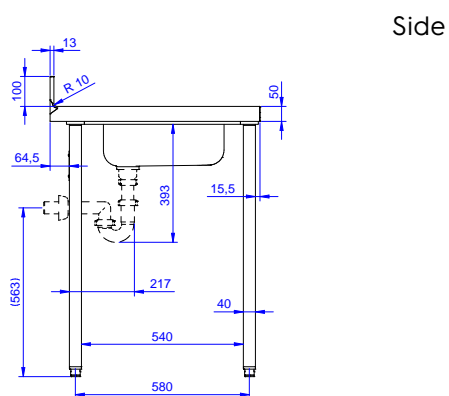
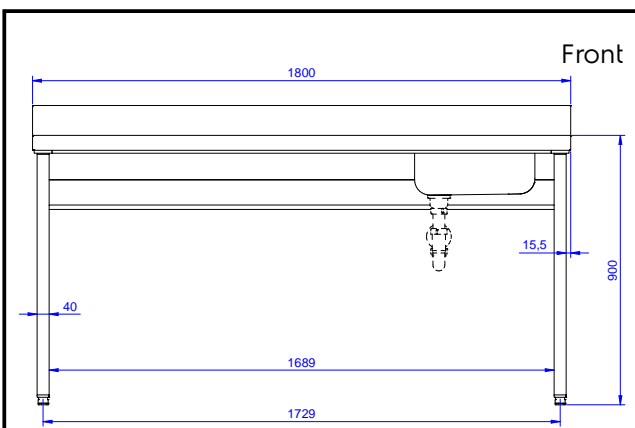
Optional Accessories

- Lower shelf for 1800mm tables and sinks PNC 855148 ☐
- Set of 4 wheels (2 with brake) d. 100mm for tables and sinks (total height on wheels= 993 mm) PNC 855150 ☐
- 3-sided underframe for 1800mm tables PNC 855155 ☐
- Single plastic drain syphon 1,5" for work tables with bowl PNC 855306 ☐
- Mixer tap with spout, foot pedal operated for sinks on legs PNC 855317 ☐
- Mixer tap with swivel spout 3/4", single hole PNC 855319 ☐
- Elbow operated mixer tap with spout 3/4", single hole PNC 855322 ☐
- Elbow operated mixer tap with short spout 3/4", single hole PNC 855323 ☐
- Elbow operated tap with spray arm and spout, single hole PNC 855324 ☐
- HD mixer tap with spray arm 3/4", single hole PNC 855326 ☐
- Foot operated mixer tap (hot and cold) with spout 3/4" PNC 855328 ☐

APPROVAL: _____

Key Information:

External dimensions, Width:	1800 mm
132854 (BTD18R7N)	
External dimensions, Height:	900 mm
External dimensions, Depth:	700 mm
Upstand Dimensions, Height:	100 mm
Upstand Dimensions, Depth:	13 mm
Upstand Dimensions, Radius:	R=10
Bowls number	1
Bowl dimensions	500x400xH200
Worktop thickness:	50 mm



D = Drain

