

# Electrolux Handwashing Basins

## Wall mounted or freestanding

Electrolux has designed a range of hand washbasins, with non-manual controls (except for code 153999), constructed to comply with current hygiene standards. The range of hand washbasins consists of 4 models: one wall-mounted, knee-operated model; one free-standing, foot operated model; one free-standing model with two basins and one free-standing, foot-operated model with front waste cabinet.



154000

### EASY TO INSTALL

- The steel foot and knee pedals make the handwashing basin extremely easy to use.
- Mixer spout, 1/2" in diameter and drain hole supplied as standard .

### EASY TO USE

- Constructed entirely in 18/10 stainless steel.
- Sound deadened pressed bowl with rounded corners and all-round lip to prevent overspill.
- Code 153999 has an upper hand washbasin (dimensions 300x240x150) and a lower drainage sink with a steel support grid.

- Rear upstand 30 mm in height and 1.5 mm thick.
- Free-standing models are equipped with stainless steel foot pedal (not protruding).
- Code 153999 has square section feet (40x40mm).
- Code 154002 is equipped with a front cabinet to store waste.

### EASY TO CLEAN

- Easy cleaning thanks to the rounded bowl and corners.
- All models comply with the more strict international standards as far as hygiene and cleanability are concerned.

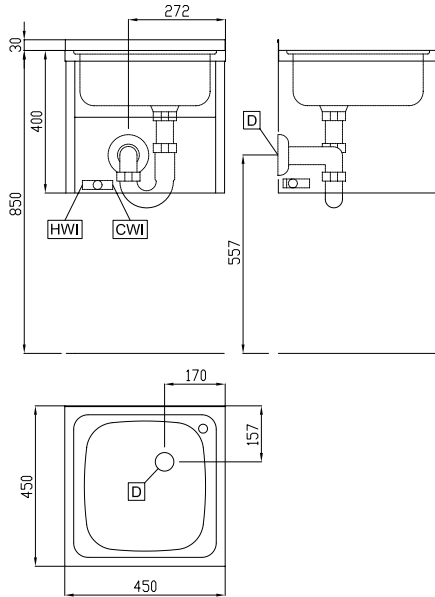
### ACCESSORIES

- The washbasins can be equipped with a wall panel and paper and soap dispensers as optional extras.
- Syphon included in the delivery.

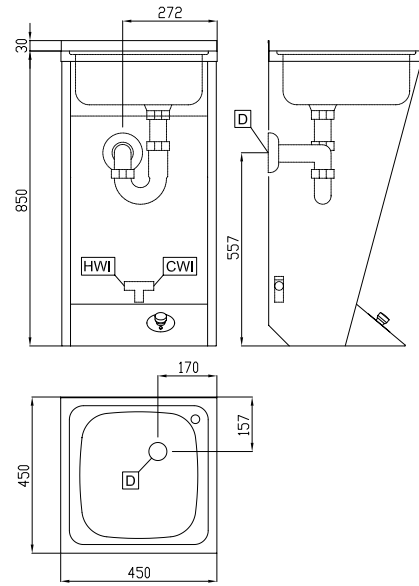


**Electrolux**

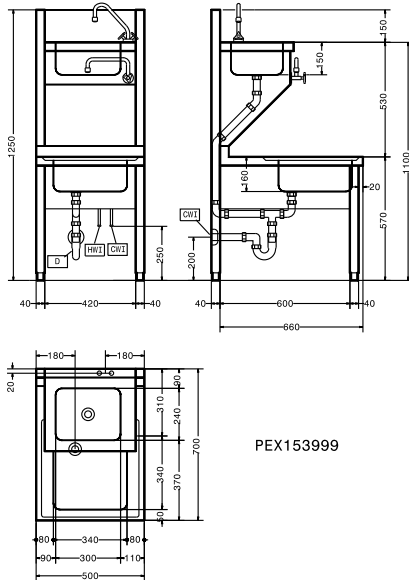
154000



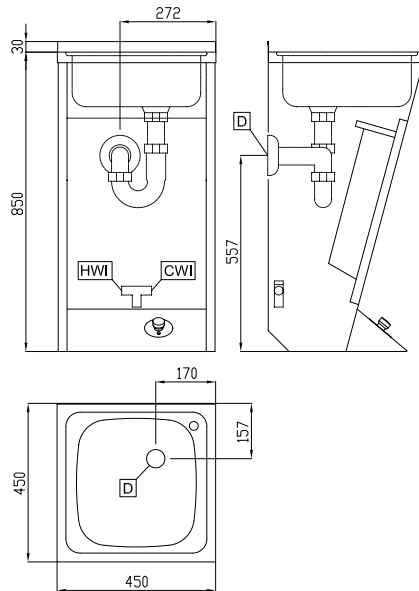
154001



153999



154002



Electrolux Handwashing Basins

Wall mounted or freestanding

AF00010

2013-10-03

	HWSW45 154000	HWSF45 154001	HWSD5 153999	HWSFB45 154002
<b>PAIGALDUSJONIS</b>				
CWI - Külma vee ühendus	1/2"	1/2"	1/2"	1/2"
CWI - Külma vee ühendus	1/2"	1/2"	1/2"	1/2"
D - Kanalisatsioon	1"1/2	1"1/2	1"1/2	1"1/2
HWI - Kuuma vee ühendus	1/2"	1/2"	1/2"	1/2"
HWI - Kuuma vee ühendus	1/2"	1/2"	1/2"	1/2"
<b>TEHNILISED ANDMED</b>				
Välismõõtmed -mm/laius	450	450	500	450
Välismõõtmed -mm/sügavus	450	450	700	450
Välismõõtmed -mm/kõrgus	400	850	1250	850
Tööpinna paksus - mm	30	30	50	30
Tööpinna kaas - mm	0.8	0.8	1	0.8
Pritsmekaitse mõõdud - mm				
kõrgus	30	30		30
sügavus	1.5	1.5		1.5
raadius	90°	90°		90°
Valamud - kogus	1	1	1	1
Valamu mõõdud (LxSxK)	340x365xH155	340x365xH155	340x340xH160	340x365xH155
Netokaal - kg	12	18	50	20
<b>LISAVARUSTUS</b>				
PAIGALDUSSEIN KÄTEPESUVALAMULE+LISAVAR.	850406	850406		850406
SEINAPEALNE NUGADE STERILISAATOR	850404	850404		850404
ÜKSIK PLAST ÄRAVOOLUSIFOON 1,5"			855306	
ÜKSIK PRONKSIST ÄRAVOOLUSIFOON 1,5"			855308	

Võib muutuda ilma etteatamata